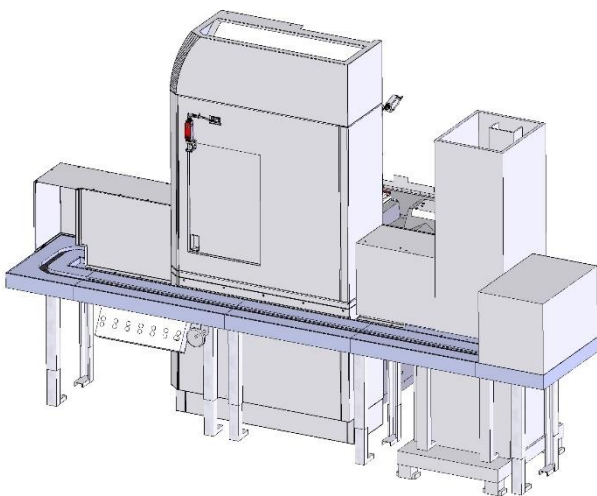




Flowtogo Conveyor

Flowtogo is a Conveyor System with a lifting station which can interface with the internal loader of the Klingelberg's SpeedViper 180/300 to provide storage for workpieces. Scope of delivery includes modifications of the housing on the SpeedViper. The system is controlled by the Klingelberg SpeedViper. For clean-factory purposes, the optional centrifuge EasyDry can be integrated into the conveyor.



- No tools required for set-up
- Space requirement less than 4 m²
- Optimally integrated Conveyor System
- User-friendly and smart engineering
- Low maintenance costs
- Durable and dependable

CONVEYOR



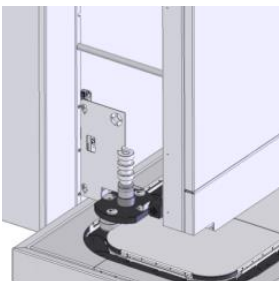
- Standard Equipment**
- Conveyor Type:** KOENIG BS300S-3.2 Heavy Duty
 - Workpiece dimensions:** max. Ø300 x 400 mm, 10 kg
 - Lifting Module:** Integrated pneumatic module with manual height limitation
 - Operator panel:** Simple operation via 11 buttons
 - Control:** Automatic mode controlled by the KlingelInberg SpeedViper

OPTIONS



EASYDRY CENTRIFUGE STATION

- | | |
|-----------------------------|---|
| Function | Removes oil and cooling lubricants from workpieces by spinning. |
| Max. spinning speed | 2000rpm |
| Workpiece clamping | Tailstock, centering tip |
| Workpiece dimensions | max. Ø300 x 400mm, 10kg |



WORKPIECE RECOGNITION

- | | |
|-------------------------------|---|
| Function | Sensor-monitored swivel flap for holding a workpiece-specific contour mask. |
| Visible contour errors | from 3mm excess |
| Workpiece dimensions | max. Ø300 x 400mm, 10kg |

Further options as well as customer-specific adaptations on request.



EQUIPMENT

PALLETS

Pallet 175
for BS300S-3.2



Pallet loading

		Workpiece ∅	max. loading
	1/1	1-150mm	22 x 10kg
	1/2	150-300mm	11 x 10kg
	1/3	-	-

TOOLING

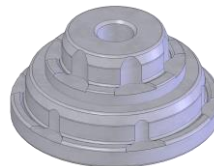
WORKPIECE- SPIGOT/BUSHING

Tooling for:
Conveyor

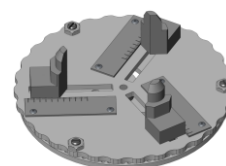
Spigot basic



Bushing stepped



Bushing adjustable



Workpiece stacking

No

No

No

Bore-∅

max. 300mm

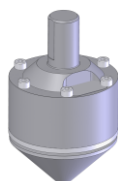
max. 300mm

max. 300mm

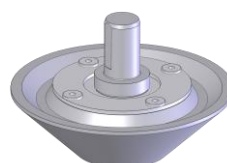
CENTERING TIP

Tooling for:
Centrifuge station

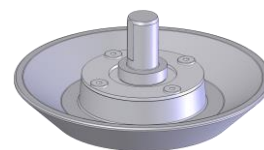
Centering tip ∅5-60



Centering tip ∅50-110



Centering tip ∅105-145



Bore-∅

5-60 mm

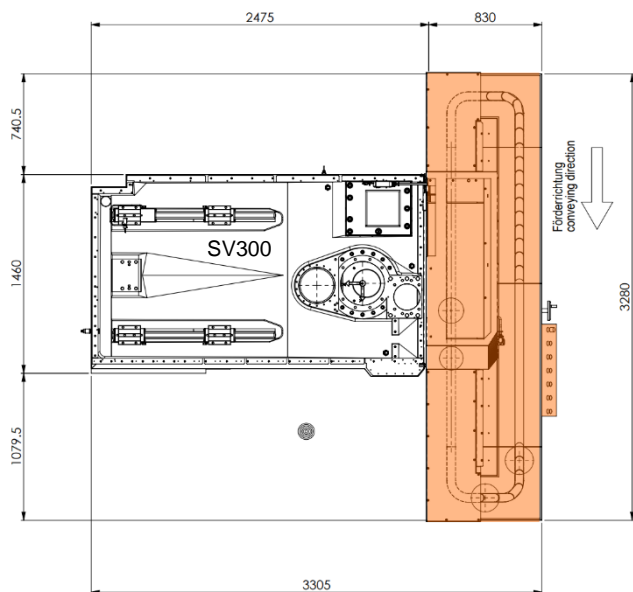
50-110 mm

105-145 mm

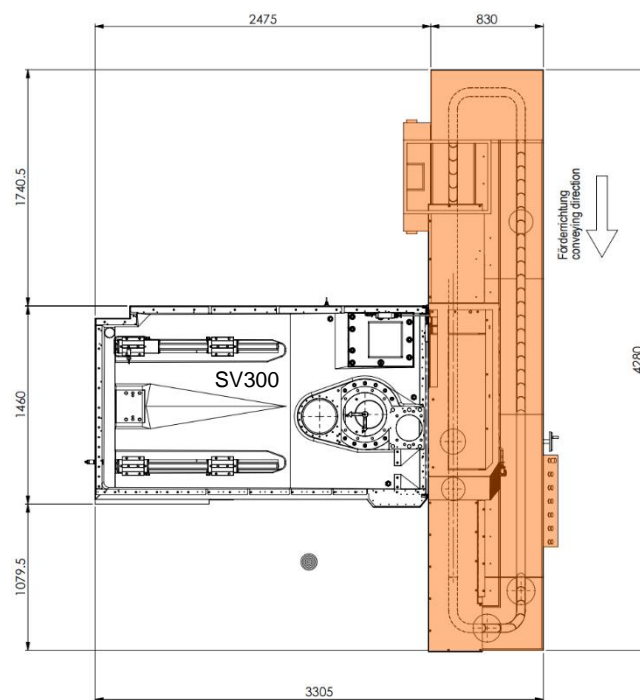
Universal tooling-packages as well as customer-specific adaptations on request.

LAYOUT

Without EasyDry



With EasyDry



EXCERPT FROM LIST OF COMPONENTS

Asynchronous motors

Siemens



Pneumatic equipment

Festo



I/O-Box

Siemens ET200pro



Sensor technology/cable

IFM



KOENIG AUTOMATION

KOENIG Automation AG was founded in 1994 in the Zurich Highlands.

Every day, a dedicated team works on the development, production and service of automations for gear grinding machines. With a special focus on individual customers requirements, our solutions are designed to meet the highest levels of quality and reliability.

Loaders and conveyors from KOENIG are manufactured for use in the toughest industrial environments. They are used reliably for multiple-shift operations across the globe, many installations being in Asia.

We are proud to count the leading machine tool, automotive and gearbox manufacturers and their suppliers amongst our customers.

Many years of experience with automation, highest levels of production quality and a reliable service, provide our customers with the best support possible for their manufacturing requirements.

Switzerland (Headquarter)

KOENIG Automation AG
Joweid Zentrum 2c
CH-8630 Rüti ZH

Tel: +41 55 450 50 20

Mail: info@koenig-automation.com

Germany

ALTRATEC Automation GmbH
Südstrasse 9
D-09221 Neukirchen

Tel: +49 371 281340

Mail: info@altratec.de

China

Bachtel China Ltd.
32 Hongxi Road, Suzhou
Jiangsu 215151

Tel: +86 512 65360065 ext. 206

Mail: stefan.schmidt@kanya.com

